

SYLVANIA

A SUBSIDIARY OF
GENERAL TELEPHONE & ELECTRONICS

MODEL: AS81W



FACTORY PREPARED TECHNICAL SERVICE DATA

MODEL AS81W AIR SUSPENSION SPEAKER

SERVICE PUBLICATIONS DEPARTMENT

Entertainment Products Division · Sylvania Electric Products Inc. · 700 Ellicott Street · Batavia, N. Y.

REMOVAL OF GRILLE ASSEMBLY AND SPEAKERS

IMPORTANT:

Air Suspension speaker systems require a complete seal around all openings. Exercise caution in removal and replacement of speakers to insure air-tight seal. Commercial Mortite is used as a sealing compound.

1. The grille assembly is secured to the speaker housing by wire brads, not visible through grille cloth.
2. Fabricate an angle bracket tool similar to illustration as shown in figure A.
3. Using the tool described in step 2, insert and pry gently at each corner brad on one side of speaker housing.
4. Place fingers under center of grille assembly and pull straight upward to release remaining brads. Remove assembly from speaker housing.
5. Remove hex-head screws from speakers and lift from housing. Disconnect leads from speaker. Install replacement speaker observing correct phasing. Original Mortite can be reused by forming a head around rim.
6. To replace grille assembly:
 - A. Drive original brads into baffle to prevent air leakage
 - B. Drive new brads into baffle through grille cloth.

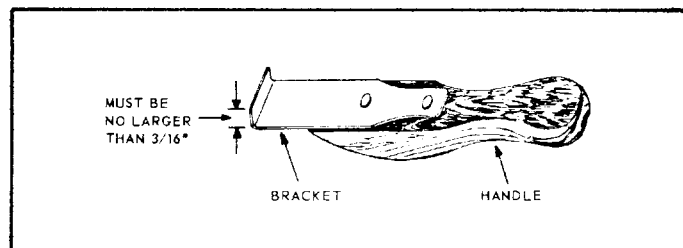
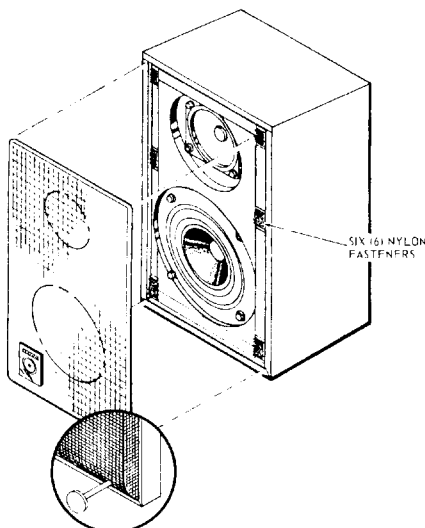
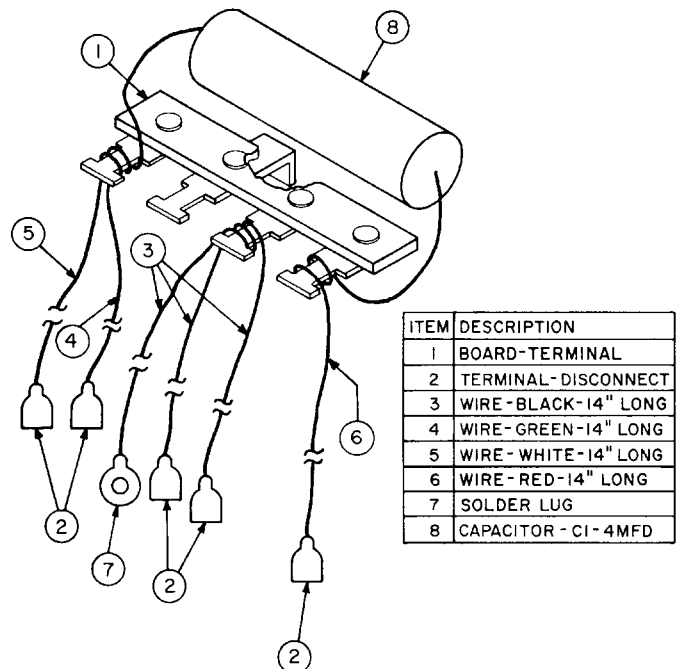


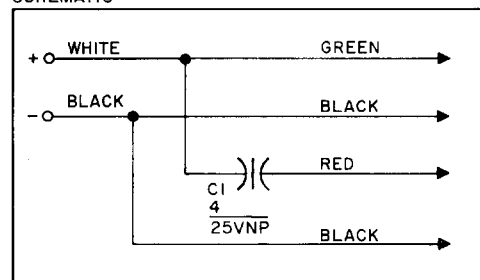
FIGURE A



CROSSOVER NETWORK



SCHEMATIC



The AS81 is a small component book-shelf, "air suspension", sealed speaker system incorporating a high compliance 8" bass driver and a 3" wide dispersion closed back tweeter.

PERFORMANCE:

Nominal system impedance	8 ohms
Recommended amplifier power	40W - IHF
Minimum power - small room	10W - IHF
- large room	20W - IHF
Frequency Response	50 - 18kHz ±3db
	40 - 20kHz ±6db
System Resonance	60Hz
Enclosure Volume	1425 cu. in.
Crossover Frequency	1500Hz

— REPLACEMENT PARTS LIST —

<u>DESCRIPTION</u>	<u>SERVICE PART NO.</u>
Cabinet - Grille Asm.	10-26196-2
- Nameplate Medallion	74-22924-2
- Trim (Bright Extrusion)	74-26207-4
Cord - Speaker	73-14921-6
Jack - Phono	73-14854-1
- Flat Washer	73-14854-4
- Mounting Eyelet	70-14635-2
- Nut	73-14854-2
- Solder Lug	73-14854-3
Speaker - 3" PM	12-26878-1
- 8" PM	12-22388-2
- Crossover Capacitor - 5/25VNP	41-14304-3

— SPEAKER COMPLEMENT —

